

Welcome to the IP Trainer Demo

IP Trainer is the only flight simulator designed to teach the FAA Practical Test Standard instrument flight procedures and help prepare applicants for the Instrument Rating checkride. The **IP Trainer** software contains 133 lessons divided into four “Blocks” of learning: Instrument Flying, Navigation, Instrument Approaches and Enroute Procedures. A fifth Block, Check Ride, simulates a comprehensive instrument rating practical test. Block 6 is called Free Flight, which allows you to leave the instructional environment and fly on your own, with no guidance or prompts, with access to a comprehensive worldwide database, and nine approach scenarios pre-programmed for you to fly solo. Some of the challenges you’ll face in the full package of lessons include:

- Basic flight maneuvers
- Aircraft configurations
- Instrument navigation
- Enroute procedures
- Instrument approaches
- Holding procedures
- Intercepting and tracking courses through the use of NAVAIDs
- Unusual attitudes
- Steep turns
- Partial panel
- IFR communications
- And a comprehensive Instrument Check Ride

IP Trainer’s built-in instrument flight instructor (CFII) is with you every step of the way, guiding you with voice prompts. Your personal CFII will:

- Demonstrate each maneuver or procedure
- Explain each step as he flies it
- Prompt you through your first attempts at the lesson
- Watch as you practice, and stop you if you go too far astray from the minimums outlined in the Instrument Rating Practical Test Standards.

With the Map feature you’ll be able to view your flight track and see exactly how well you flew.

Along with your CFII’s voice, you’ll hear an entire cast of ATC personalities including Ground control, Clearance delivery, ATIS, Tower, and Approach and Departure control.

Each lesson includes a Briefing to detail the objective of the lesson as well as outline the exercises involved.

The aerodynamically precise Cessna 172 simulator provides all required radios and instrumentation used in instrument flying. The lessons are built around real approaches and real airspace found in the United States. The program also offers the ability to turn off the lessons and “Just Fly” any approach in the U.S. and many worldwide, practice your lesson at your airport, or fly the pre-programmed approach scenarios “solo” – without the guidance of the virtual CFII. The innovative Scan Trainer lets you practice and refine your instrument panel scan, encouraging your eyes to the appropriate instrument for a given flight configuration by lighting the instrument bezels in a preprogrammed pattern. Should you wish to add or modify an approach, navaid or airport, a database editor feature is also included.

IP Trainer users get the instrument dual flight they need to master the complex instrument procedures and develop good habits for flight by reference to instruments.

IP Trainer Minimum Computer System Requirements

Windows 2000, Windows XP (Home & Professional), Vista (Home Premium & Ultimate), Windows 7 (Home Premium, Professional & Ultimate) Operating Systems. Windows compatible processor, 800 MHz or faster Windows (2000 & XP), 1.0 GHz or faster (Vista & Windows 7). 256 MB System RAM (Win2000/XP), 512 MB (Vista), 1024 MB (Win 7). 30 MB available hard drive space for the Demo version (145 MB for the full version). DirectX 8.1 or later. DirectX compatible video card with 32 MB minimum Video Memory. 800x600 minimum screen resolution. DirectX-compatible sound card and speakers. Mouse or other compatible pointing device. Joystick or yoke.

Installing the IP Trainer Demo

- The demo file is a self-executable file, called "ipt_demo_installer.exe". Download this file, and save it to your choice of location on your computer's hard drive.
- After downloading, close all programs, including your Internet connection, virus scanner and your browser.
- Locate the downloaded installer executable "ipt_demo_installer.exe" and double click it to start the install process.
- A shortcut to the program will be placed on your desktop when the install has completed. To run the demo, double-click on this shortcut.

Calibrating Your Joystick or Yoke

The first time you use the **IP Trainer Demo** you'll need to Calibrate your yoke or joystick. Follow the instructions below to complete the calibration process and start using the program.

- Ensure the flight controls you plan to use with the program are attached to the computer.
- Double click the IP Trainer icon. You will be taken directly to the Calibration screen the first time you run the Demo.
- Once in the main Calibration screen, you will have the opportunity to perform a "quick calibration". Select the FLIGHT CONTROLS button. In the Flight Controls menu, you should see your controls on the list. Choose the flight controls you wish to activate by pressing the left of the two boxes on the right side of the screen until an asterisk appears in the box.
- Once you have selected the flight controls to be used with the program, press the LIMITS button and perform a quick calibration by fully articulating the pitch, roll, throttle and yaw axes.
- When finished with the limits, press the box marked BUTTONS. Press and hold the flight control button (e.g., the trim up) while simultaneously clicking the left mouse button with the mouse arrow pointing to the on-screen "up trim" triangle. Once activated, the mouse arrow will turn into a "crosshair". When correctly assigned, the triangle will turn green when the trim button is depressed.
- You may now press the DONE button and enjoy flying the IP Trainer simulator.

Flying the IP Trainer Demo

We have provided a sample of 2 flying lessons for you to preview. The lessons available on this Demo are in black type. The lessons included in the full program, but not accessible in the Demo, are in gray type. The first demo lesson can be found in the Instrument Flying, Pitch and

Bank, Standard Rate Turns. The next demo lesson can be found in Instrument Approaches, ILS, BDL ILS Rwy 6. The approach plate required for the lesson is included in this document.

Each lesson includes a Briefing, which details the exercise involved with the lesson. Once you've read what you can expect for the lesson, as well as what will be expected of you, click the appropriate button to complete the lesson in one of the four modes available. (You may access the Briefing while taking the lesson by pressing the "Briefing" button.)

The lessons feature these 4 modes:

- Explain: The **IP Trainer** CFII will fly the selected lesson, explaining his actions to you as the lesson progresses.
- Prompt: While you fly the lesson, the **IP Trainer** CFII gives you voice prompts, instructing you on the next step necessary to fly the procedure.
- Practice: The lesson objective is the same as the previous two modes, but there is no voice prompting from your **IP Trainer** CFII.
- Test: This mode has you fly to the tightest tolerances with no prompts to guide you along the way.

Once you've completed a lesson, you can click on Evaluate in the Menu to review your performance. Each instruction you've received from the **IP Trainer** CFII is listed here. Clicking any of the '?' buttons next to the task list will take you to the second layer of evaluation elements. This will detail how you performed each task in relation to the FAA Practical Test Standards.

After reviewing your Evaluation, click Map to see an overhead and profile view of the lesson you just flew.

Free Flight in the IP Trainer Demo

Free Flight, Fly Anywhere allows you to take what you've learned from the lessons and practice in your home airspace — the full retail version of the software ships with the worldwide database. This demo limits you to within 75 NM of Helena, MT (HLN) and starts you at HLN. Once you've begun flying, you may review your flight by using the Map button on the Free Flight Control Menu. The Demo will provide you with 5 uninterrupted minutes of Free Flight time.

You may select Free Flight, ISP ILS Rwy 6 to fly this approach solo – it is the same scenario from the tutorial, without the guidance of the virtual CFII. Take advantage of the Scan Trainer to perfect your instrument scan technique; the keyboard letter 'S' activates and deactivates the legend for this feature. At any time, you may also repeat the last line of on screen text by pressing the keyboard letter 'R.'

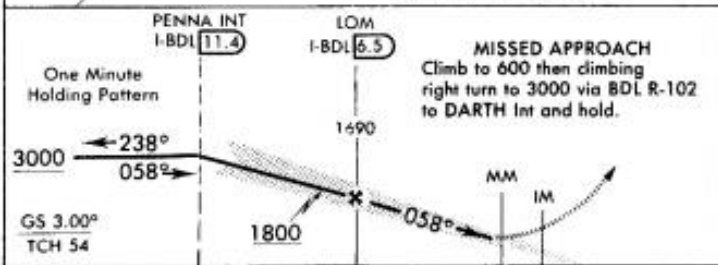
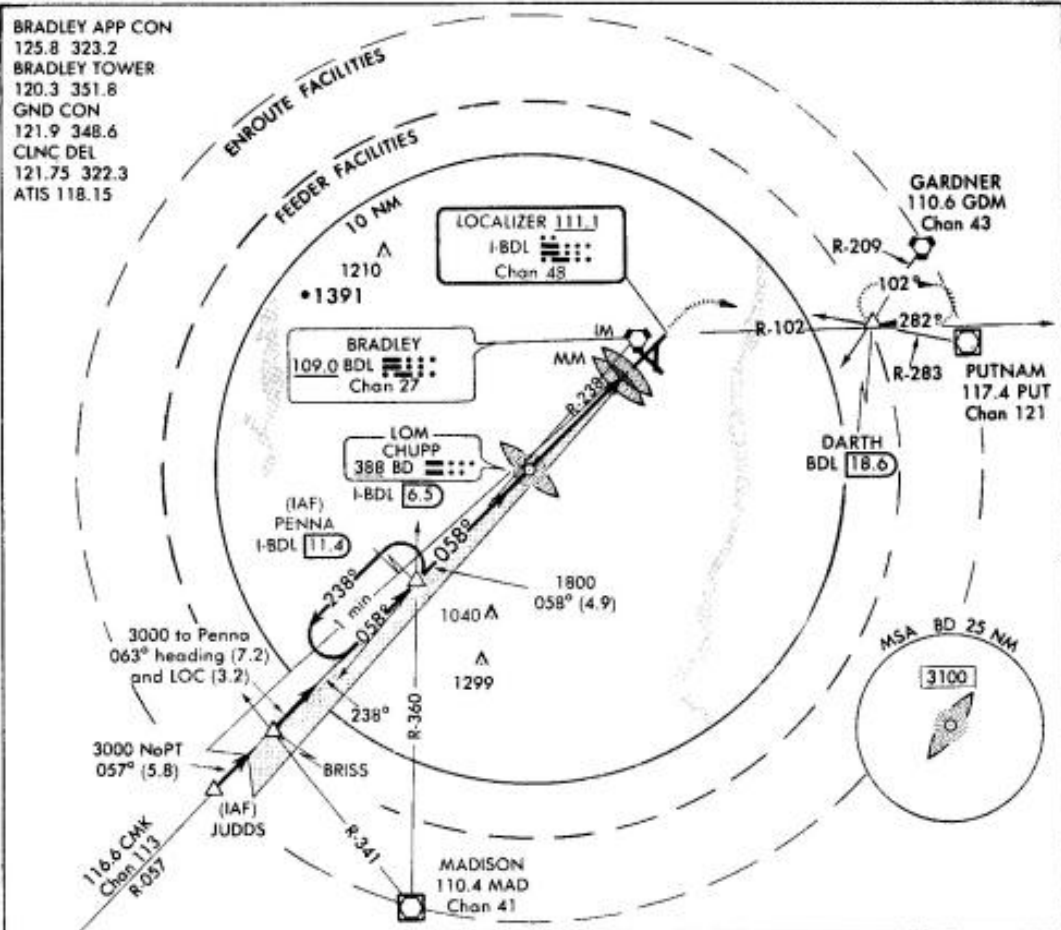
To Order IP Trainer

Contact an aviation retailer in your area, call ASA at 1-800-ASA-2-FLY (or 425-235-1500) or visit us online at www.asa2fly.com to order the full and unrestricted version of **IP Trainer**. The program will include the Instrument Flying textbook, as well as the Pilot's Operating Handbook, which details all the program features and includes the charts and instrument approach plates used in the lessons, and the CD with all 133 lessons and unlimited flying time in the Free Flight mode.

ILS RWY 6

WINDSOR LOCKS/BRADLEY INTL (BDL)
WINDSOR LOCKS, CONNECTICUT

BRADLEY APP CON
125.8 323.2
BRADLEY TOWER
120.3 351.8
GND CON
121.9 348.6
CLNC DEL
121.75 322.3
ATIS 118.15



CATEGORY	A	B	C	D
S-ILS 6	374/18 200 (200-1/2)			
S-LOC 6	760/24 586 (600-1/2)	760/50 586 (600-1)	760/60 586 (600-1 1/2)	
CIRCLING	760-1 586 (600-1)	760-1 1/2 586 (600-1 1/2)	1060-3 886 (900-3)	

FAF to MAP 4.5 NM					
Knots	60	90	120	150	180
Min.Sec	4:30	3:00	2:15	1:48	1:30



ILS RWY 6

41°56'N-72°41'W

WINDSOR LOCKS, CONNECTICUT
WINDSOR LOCKS/BRADLEY INTL (BDL)